



Business Value:

- Faster time to production with simplified device commissioning and replacement
- Cost savings with plant-wide integration, configuration and diagnostic support of multiple devices and protocols
- Standardization and effort reduction with superior engineering templates
- Improved plant up-time with advanced-diagnostics and predictive maintenance capabilities

Foxboro EvoTM Maintenance Software

Maximize uptime and cost-savings with proactive asset management

Foxboro Evo Maintenance Software offers an integrated tool belt to help you commission, configure and maintain your field devices throughout the lifecycle of your plant - no matter the device type, vendor or protocol used. You can get your plant online faster with intuitive commissioning wizards that take the guesswork and manual drudgery out of device commissioning and shift your operations to a predictive maintenance model to help spot problems before they happen and quickly take corrective action without downtime.

THE CHOICE IS YOURS- ANY PROTOCOL, ANY DEVICE

Foxboro Evo offers engineering and maintenance interoperability with multi-vendor devices, utilizing all major protocols. With Foxboro interoperability and any fieldbus capabilities, you can maintain your preferences because our system will adapt to you - the choice is yours!



- Complete lifecycle coverage of all field device tasks such as configuration, commissioning, maintenance, and diagnostics in one engineering and maintenance environment
- Seamless integration of all major protocols—Fieldbus Foundation, HART, PROFIBUS and more
- Full support of both FDT Device Type Managers + EDDL technologies to synergistically provide unmatched device configuration, commissioning and diagnostic support

FASTER, EASIER PLANT START-UPS

You can commission all devices prior to your plant startup or to replace a single failed device after years in service. The Field Device Manager within Foxboro Evo Maintenance Software automates and simplifies typical device synchronization, calibration, commissioning and loop check routines. Clients have realized significant time savings per device utilizing Field Device Manager to easily and quickly get their production up and running or back online.

SIMPLIFIED ENGINEERING— CONFIGURE ONCE AND REPLICATE

You can now eliminate repetitive engineering of each and every field device. The vast majority of configuration work can be done once in the device template, which serves as a master to each device instance, and is replicated. With excellent template capabilities and configuration inheritance, clients can take advantage of best practices and change propagation to drastically reduce the time and effort typically required to replace devices and start-up your plant.

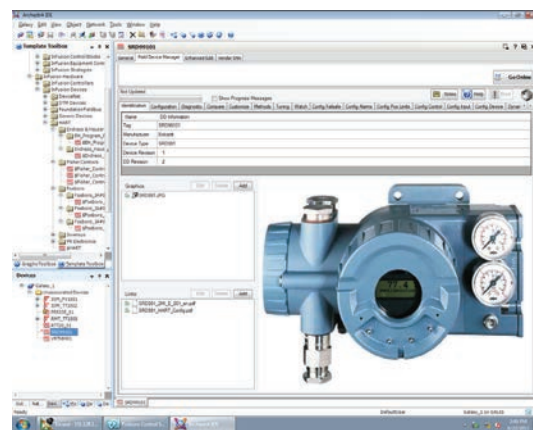
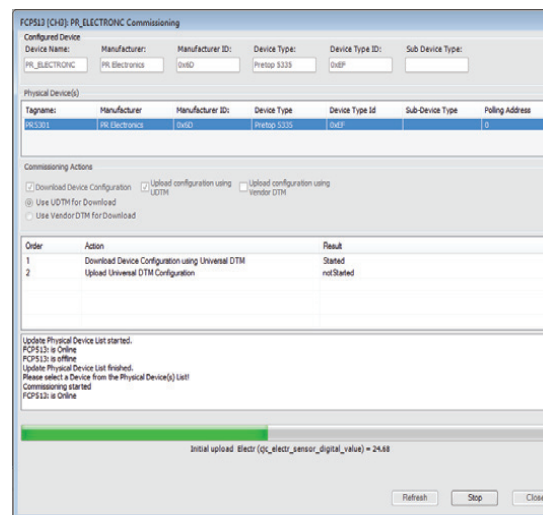
MAXIMIZE OPERATIONAL UPTIME AND MAINTENANCE EFFICIENCY

Perhaps the most significant value you'll realize from Foxboro Evo Maintenance software is the ability to analyze and diagnose instrumentation in your running plant. Moving to predictive device maintenance helps you spot problems early, before they become severe, giving time to plan corrective action without downtime.

Foxboro Evo offers support for FDT vendor-based Device Type Managers and Enhanced EDDL so you can take advantage of advanced diagnostics written specifically for your device by those who know it best—it's vendor. Instead of trips out to the field device, most diagnostic and maintenance activities can now be performed from workstations in areas of convenience so maintenance staff can safely and quickly examine device status and diagnose problems.

Our Maintenance Response Center is an ERP integrated plant triage tool that provides the maintenance supervisor with a detailed view of field device health, event analysis, reporting functions and integration with the work order system. Unlike other instrument asset management software vendors, our product provides a real time detailed view of intelligent field device. This enables the maintenance supervisor to make immediate smart and proactive maintenance decisions in an effort to minimize costly unplanned downtime.

www.foxboro.com/foxboroevo/maintain



inven.sys

Invensys Operations Management • 10900 Equity Drive, Houston, TX 77041 • Tel: (713) 329-1600 • Fax: (713) 329-1700 • iom.invensys.com

Invensys, the Invensys logo, Archestra, Avantis, Eurotherm, Foxboro, IMServ, InFusion, SimSci-Esscor, Skelta, Triconex, and Wonderware are trademarks of Invensys plc, its subsidiaries or affiliates. All other brands and product names may be the trademarks or service marks of their representative owners.

© 2012 Invensys Systems, Inc. All rights reserved. No part of the material protected by this copyright may be reproduced or utilized in any form or by any means, electronic or mechanical, including photocopying, recording, broadcasting, or by any information storage and retrieval system, without permission in writing from Invensys Systems, Inc.

Rev. 1/14 PN FX-PN FX-0224